

In this issue

- Introducing the Upgraded 1L Twin Bioreactor!
- Bridging Biotech Frontiers from Thailand to Uzbekistan!
- Master Our Bioreactors with New Video Guides!
- Customized Fermenter Vessels Unveiled!
- Easy Access with New Lid Design!
- FAT Excellence: Delivering Bioreactor Perfection!
- Optimize Operations with Our Advanced Operator Interface!

Introducing the Upgraded 1L Twin Bioreactor!



We're thrilled to introduce our enhanced 1L twin #bioreactor. It boasts easy-to-clean magnetic mixers and advanced peltier systems. Each reactor operates independently, allowing for two separate fermentations. The standalone design requires only electricity, making it ideal for researching the best fermentation process parameters. Plus, its condensers come with Peltier elements for exceptional exhaust gas cooling without the need for circulating water.

[Read More](#)

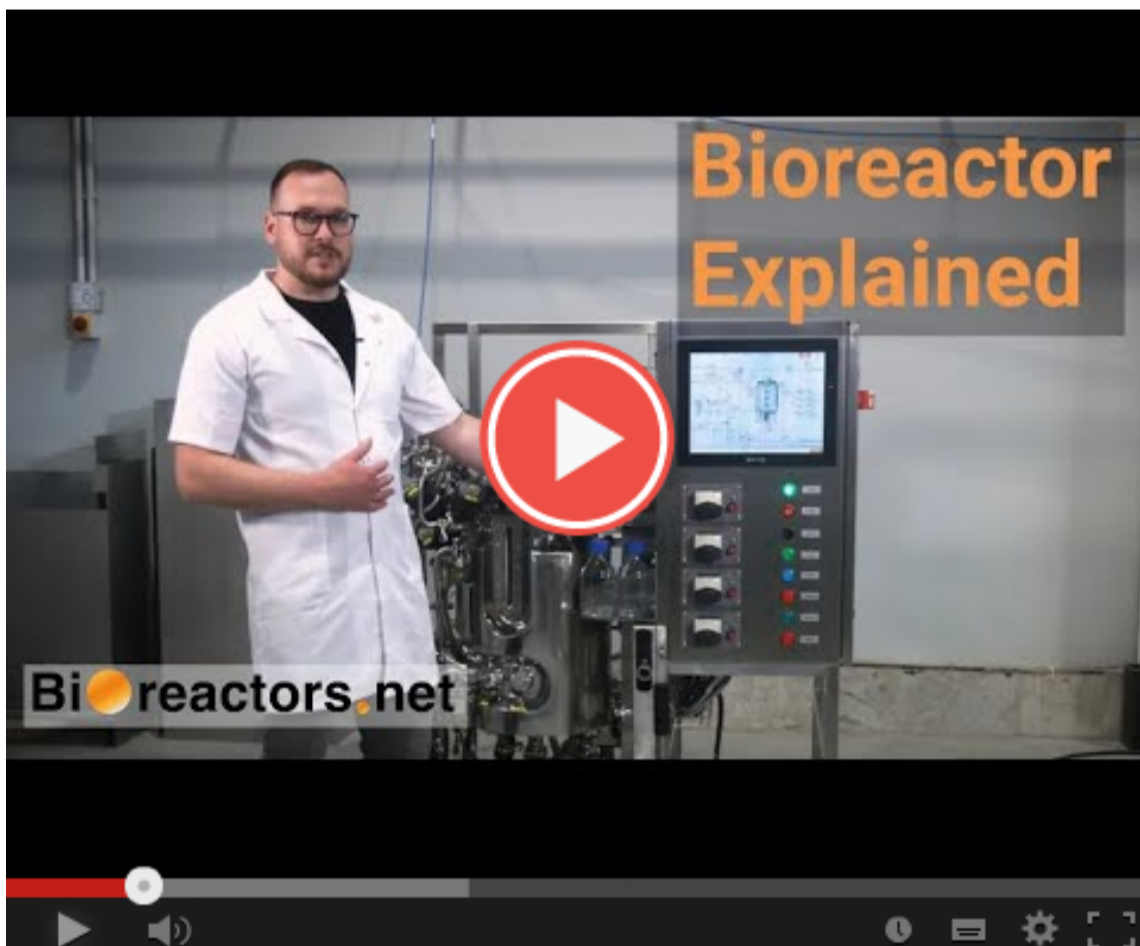
Bioreactors.net: Bridging Biotech Frontiers from Thailand to Uzbekistan!



Bioreactors.net is on a global mission. At the Thailand LAB INTERNATIONAL exhibition, we're in partnership with Gibthai Co., Ltd., displaying our groundbreaking bioreactor advancements. Concurrently, our team is stationed in Tashkent, Uzbekistan, embarking on a transformative collaboration centered on biotechnical fermentations and laboratory GMP setups. Our goal is twofold: to showcase our latest innovations and to engage in pivotal dialogues that will redefine the biotech landscape for our Uzbek client. From Thailand's bustling expo floors to Uzbekistan's collaborative hubs, we're passionately driving the future of biotechnology.

[Read More](#)

Master Our Bioreactors with New Video Guides!



Master our stainless steel bioreactors with our comprehensive 10-video series! Dive into topics like sampler sterilization, aseptic sampling, and equipment upkeep. For precise and peak performance, follow our step-by-step guide. Check it out here: <https://lnkd.in/dtrgvFBA>

[Read more](#)

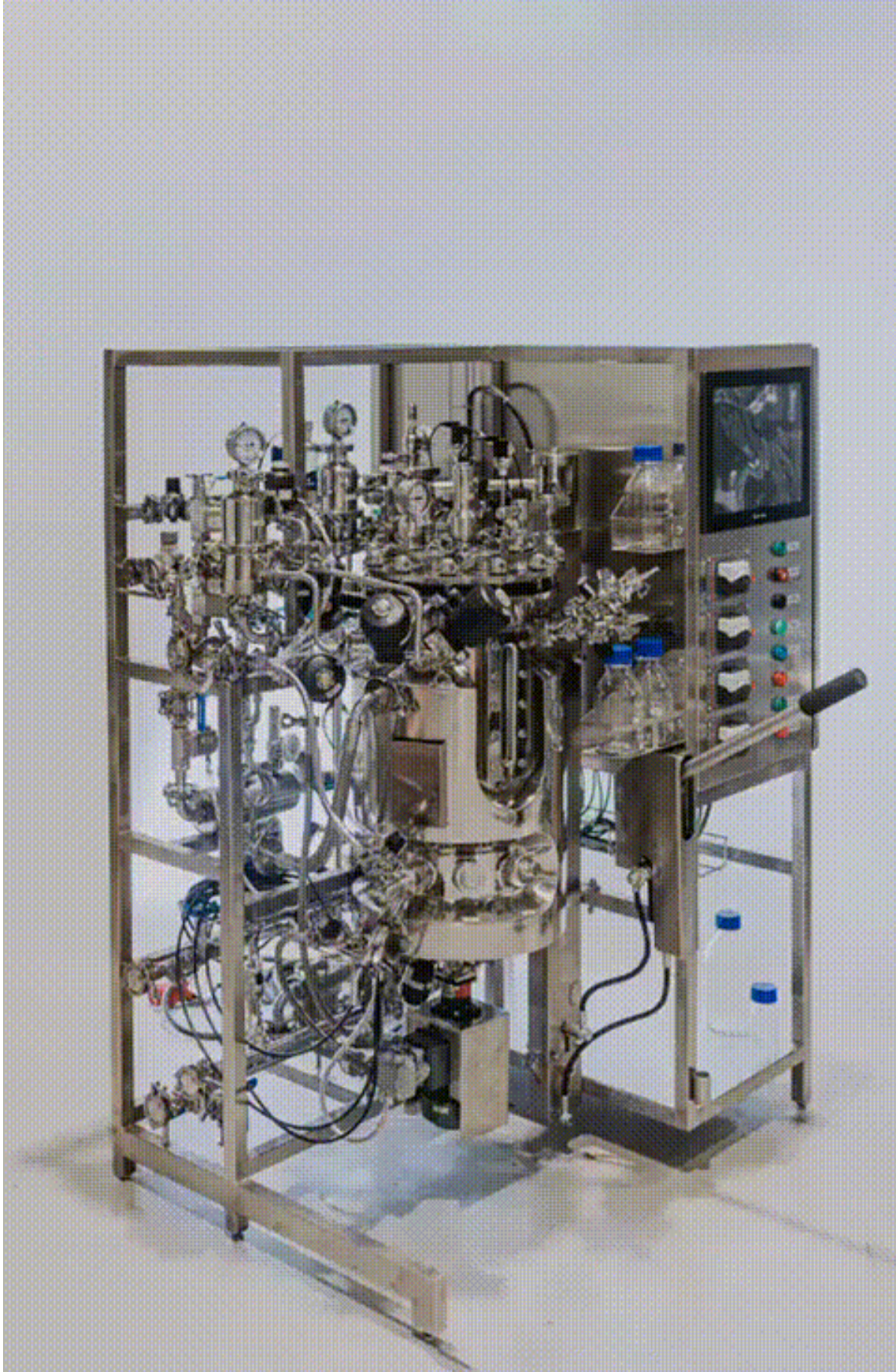
Customized Fermenter Vessels Unveiled!



Spotlight on our 20L stainless steel pilot fermenter vessels - the epitome of customization! Two models stand side by side, each tailored for distinct biotechnological processes. Key differences: Mirrored integrated technological skid. Varying height/diameter ratios. The left vessel boasts an optical density sensor. The right vessel features specialized feed pumps, gas lines, SCADA systems, and a CIP function. Every detail, from pumps to programs, is optimized for a production facility's unique layout, ensuring maximum efficiency.

[Read more](#)

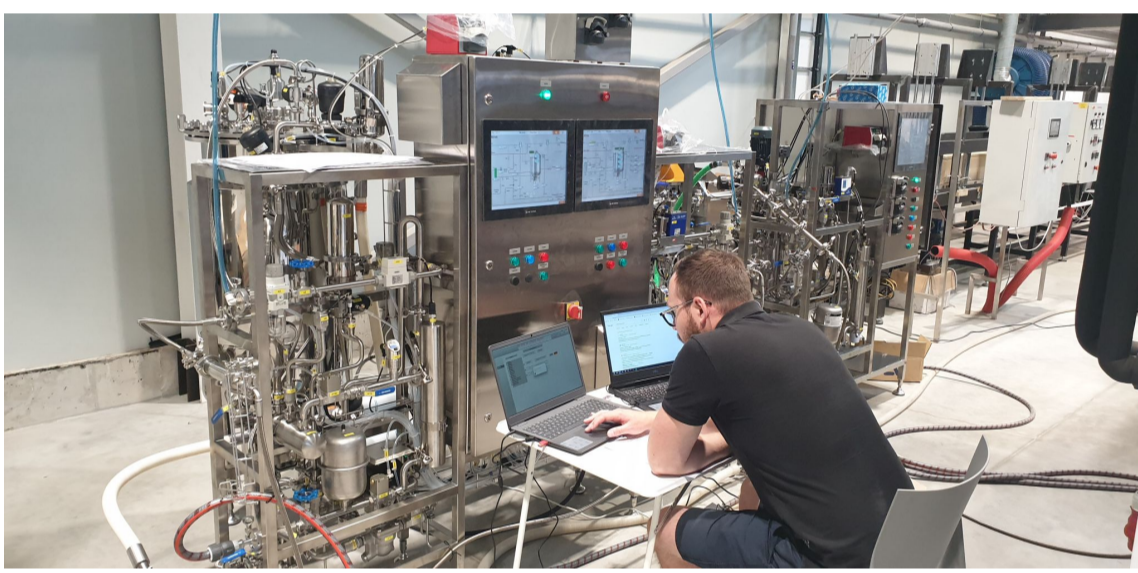
Easy Access with New Lid Design!



Ensuring top-notch maintenance for our stainless steel bioreactors, we've introduced an adjustable and pivotable lid lifting device. This design facilitates effortless access to the bioreactor, whether for cleaning or upkeep. The lid's pivoting motion guarantees easy reach to all ports on the top lid, and safe, unobstructed entry to the vessel itself.

[Read more](#)

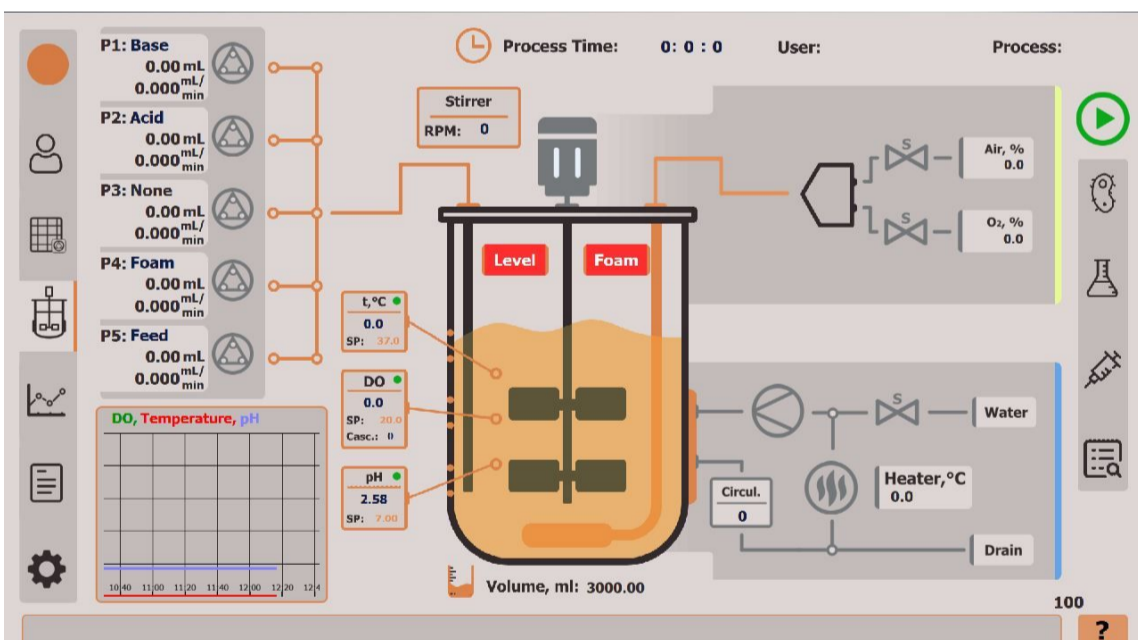
FAT Excellence: Delivering Bioreactor Perfection!



Our bioreactors, like the recent 10L & 100L units for Bioanalytic Sp. z o.o., undergo stringent Factory Acceptance Testing (FAT) for top-quality assurance. Coupled with our advanced SCADA system, we offer streamlined fermentation and cooling processes. Clients can witness FAT onsite or remotely, while our heat-insulated closed pipeline loop ensures precision.

[Read more](#)

Optimize Operations with Our Advanced Operator Interface!



Elevate your operational efficiency with our operator interface, designed for comprehensive monitoring and precise control. Our main screen delivers an intuitive platform to monitor key process parameters, including setpoints, sensors, valve status, and alarms. Dive deeper with the settings screen, allowing tailored parameter configurations and advanced PID controls covering essential processes like heating, DO enrichment, and cooling. Experience streamlined process management, optimal performance, and a user-centric environment with our state-of-the-art solution.

[Read more](#)



Our mailing address is:

info@bioreactors.net

Want to change how you receive these emails?

you can [update your preferences](#) or [unsubscribe from this list](#).